

Stallan-Brand

April 2020

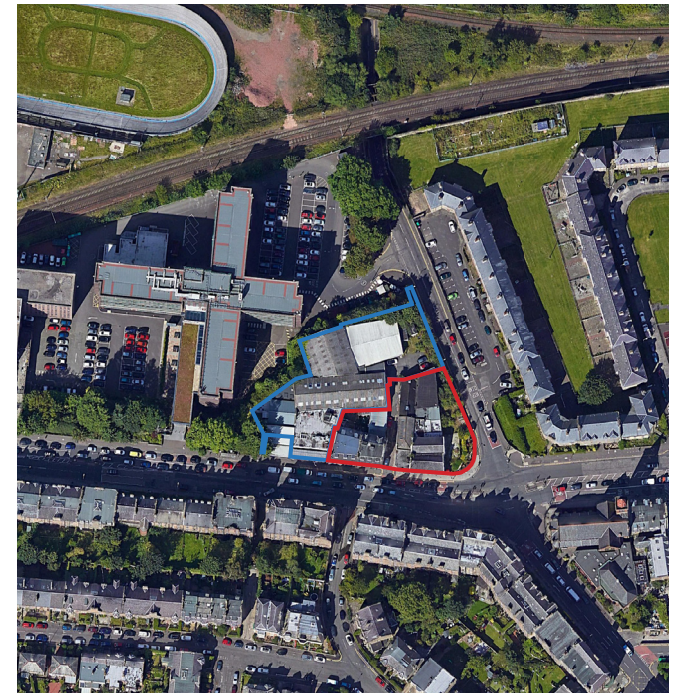
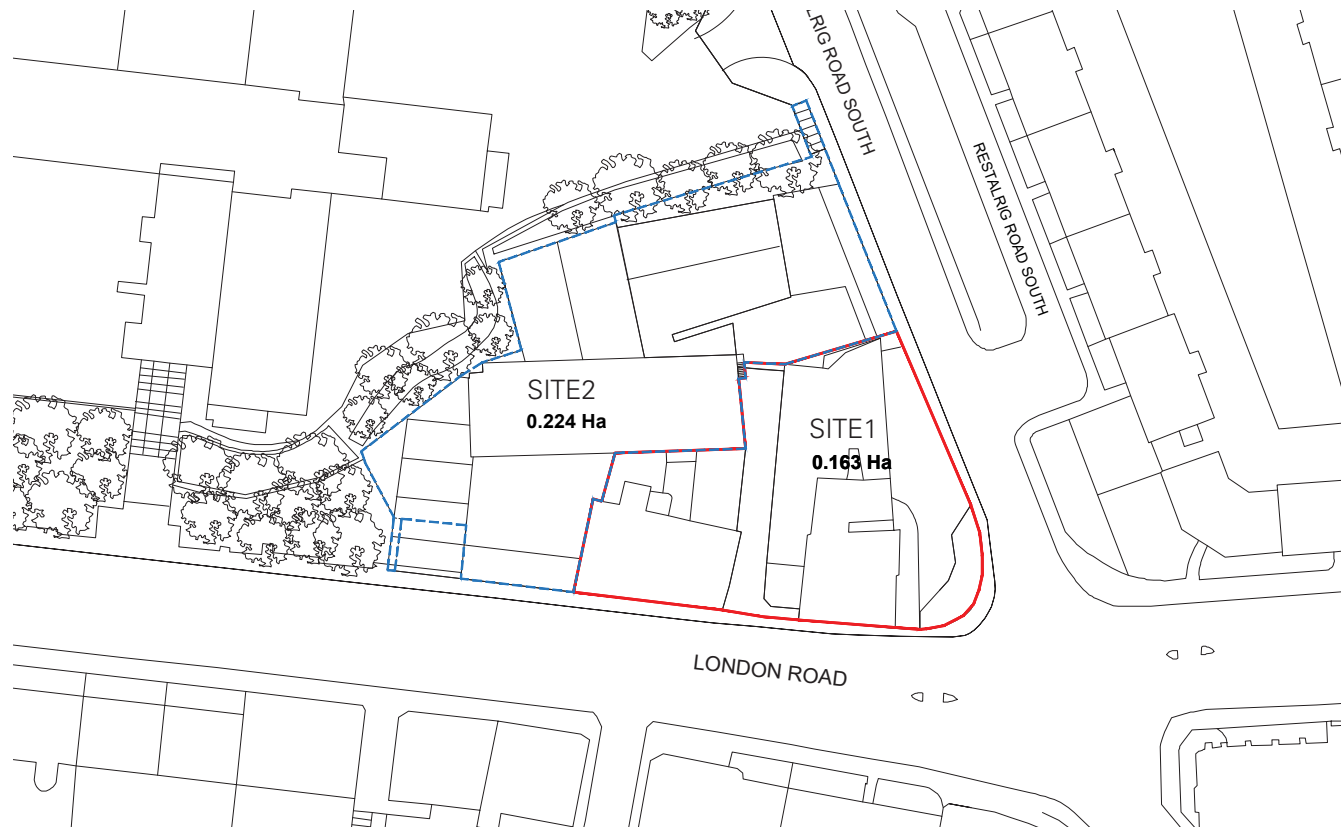
SITE AT JOCKS LODGE \_ EDINBURGH  
SITE APPRAISAL



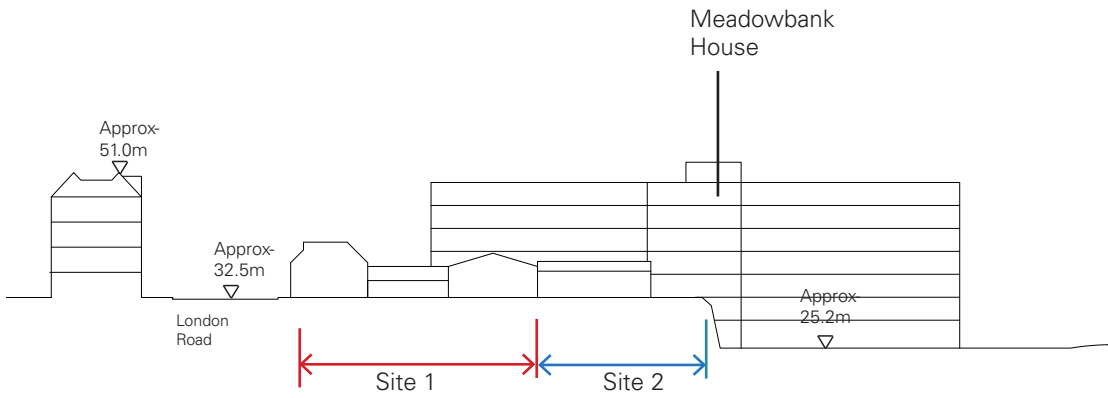
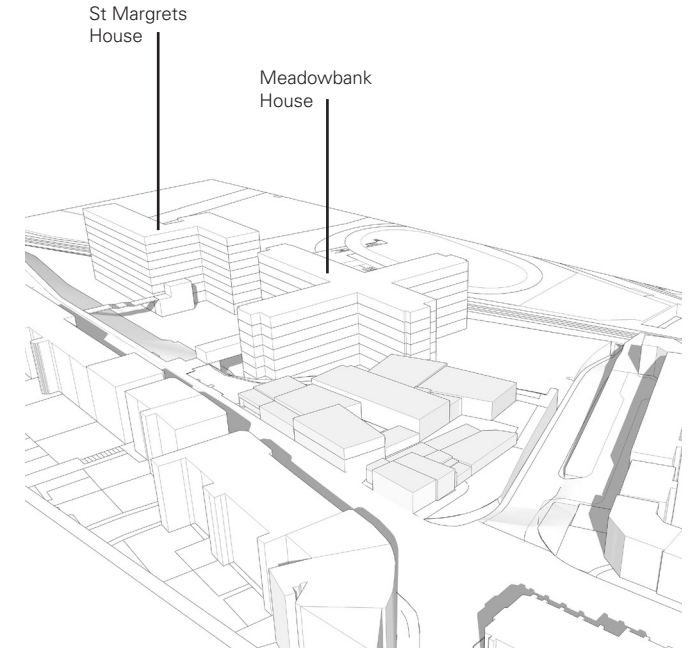
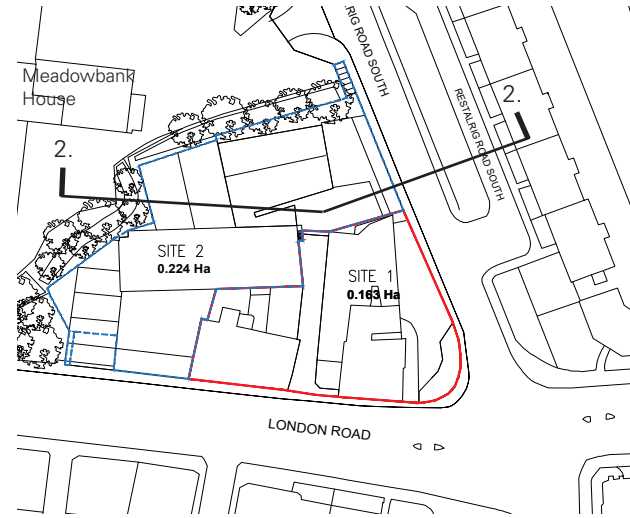
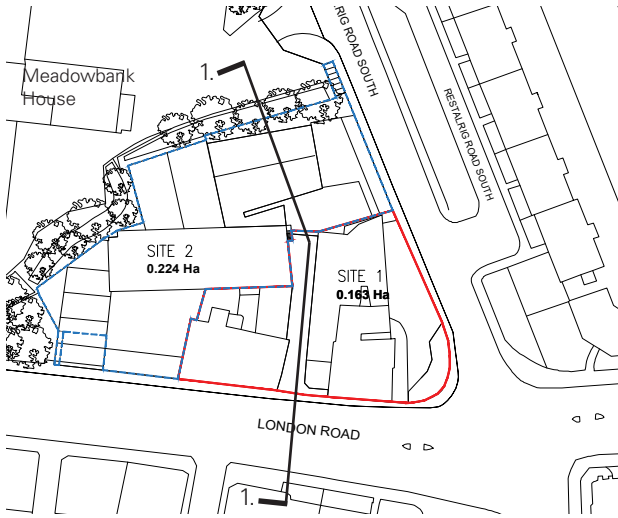
# Site

The site is located within the Jocks Lodge area of Edinburgh on the corner of London Road and Restalrig Road South.

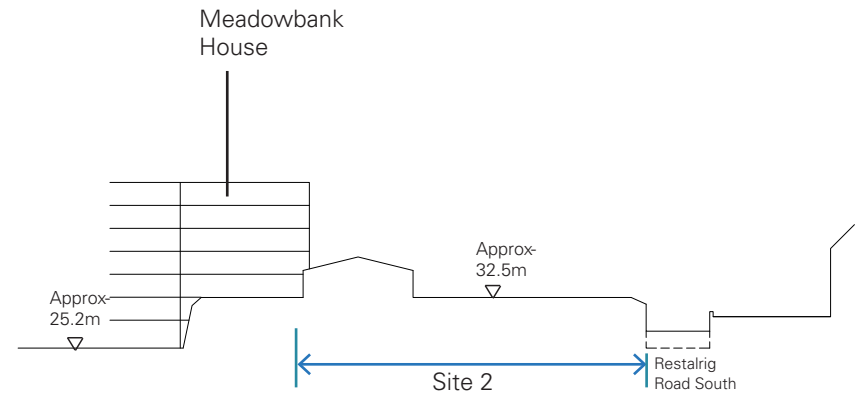
This document considers Site 1 initially. The area of Site 1 is 0.163 Ha.



# Site



Section 1



Section 2

# Scheme Proposal

## 212 Student Rooms

Level 0	6 Rooms	6
Levels 1	27 Rooms	27
Levels 2-6	31 Rooms	155
Level 7	24 Rooms	24

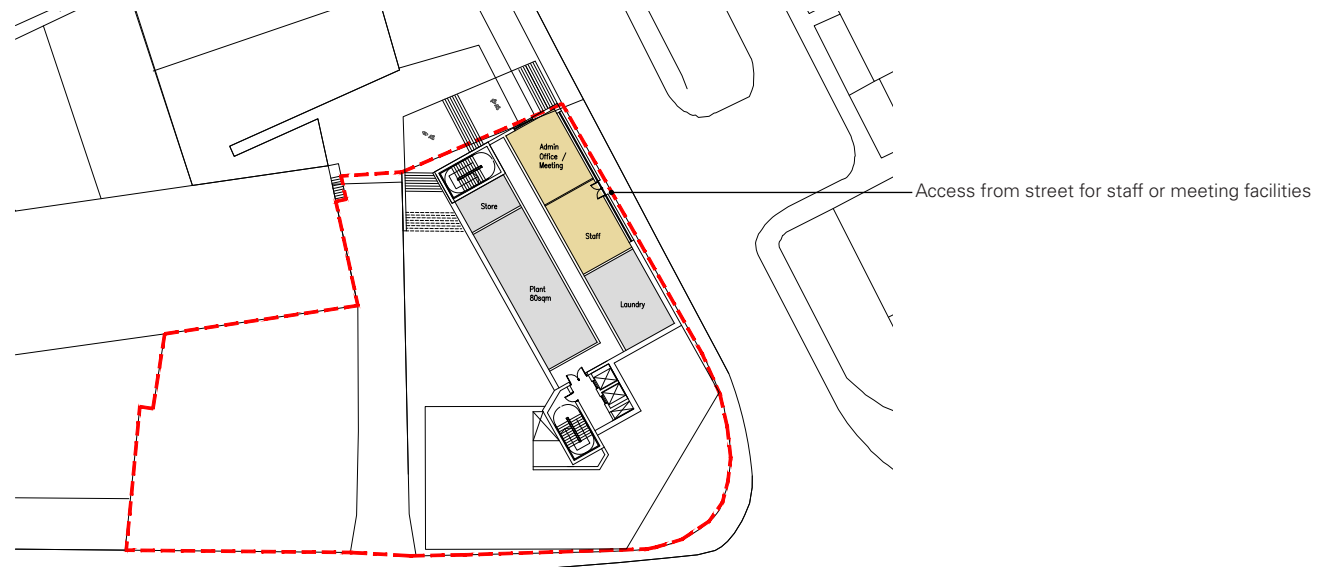
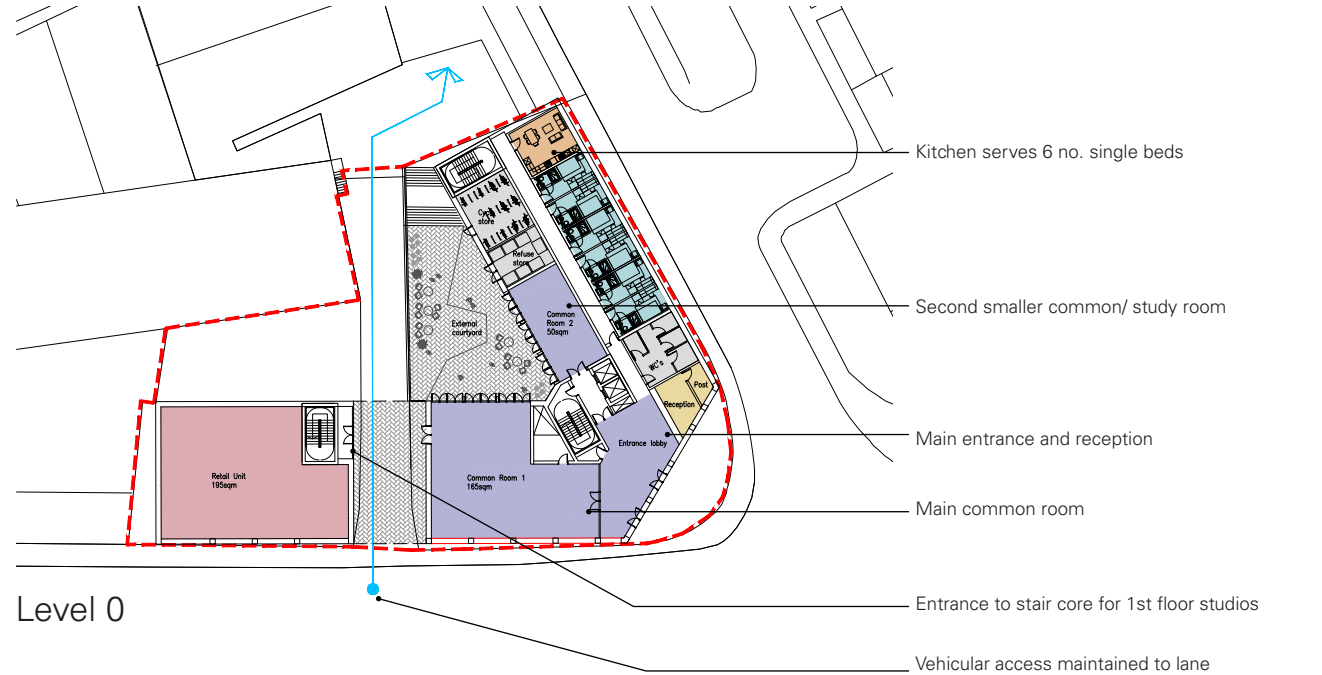
**Total 212**

### Level 0

Entrance Lobby	
Reception & Mail Room	
Single Study Bedrooms	6
Shared Kitchen	1
Refuse Store	
Cycle Store	
Common Room Area	
Study Room Area	
Commerical Unit	195sqm / 2095sqft

### Level -1

Staff Office and Meeting Room
Staff Kitchen and WC
Common Room Area / Study Rooms
Laundry
IT / Server Room
Plant Room

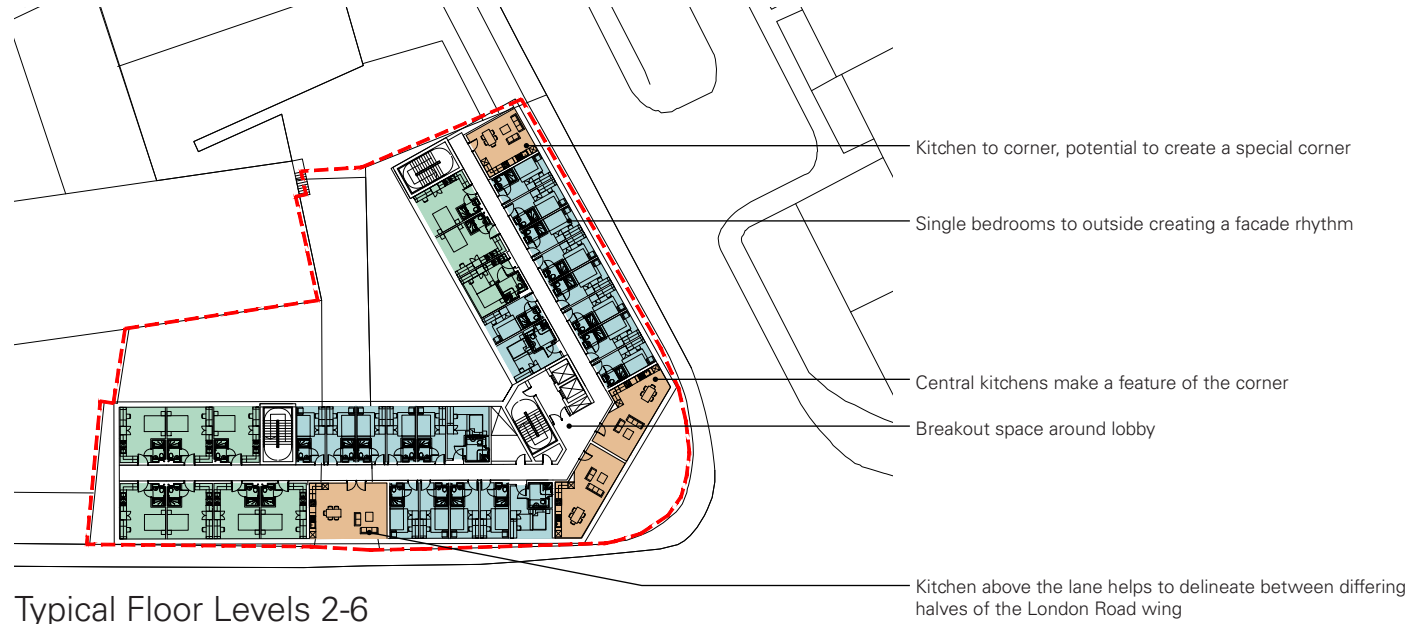


Level -1

# Scheme Proposal

## 212 Student Rooms

Single Study Bedrooms	123	
Accessible Bedrooms	20	
	<b>total</b>	<b>(143)</b>
Studios	56	
Accessible Studios	13	
	<b>total</b>	<b>(69)</b>
<b>Total</b>	<b>212</b>	
<b>(Total Accessible)</b>	<b>33</b>	



Typical Floor Levels 2-6

## Level 7

Single Study Bedrooms	14
Accessible Bedrooms	3
Studio	6
Accessible Studio	1
Shared Kitchens	3

## Typical Floor (Levels 2-6)

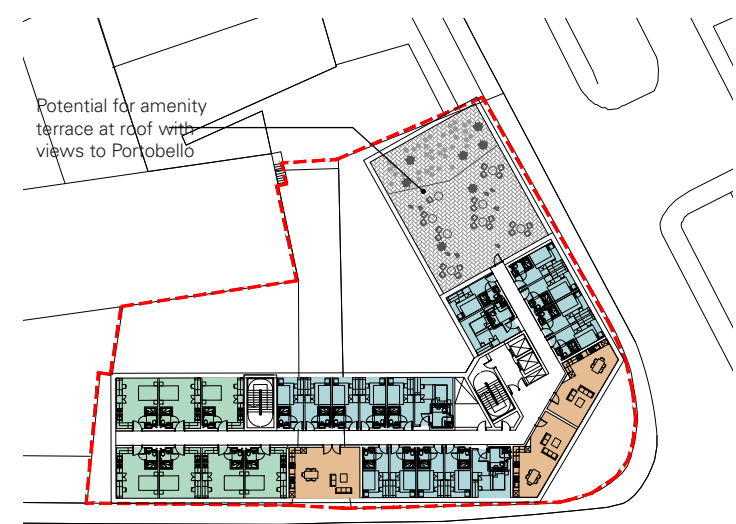
Single Study Bedrooms	18	(90)
Accessible Bedrooms	3	(15)
Shared Kitchens	4	
Studio	8	(40)
Accessible Studio	2	(10)

## Level 1

Single Study Bedrooms	13
Accessible Bedrooms	2
Studio	10
Accessible Studio	2
Shared Kitchens	3



Level 1



Level 7

Stallan-Brand

